

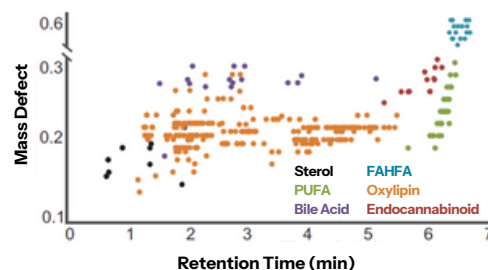
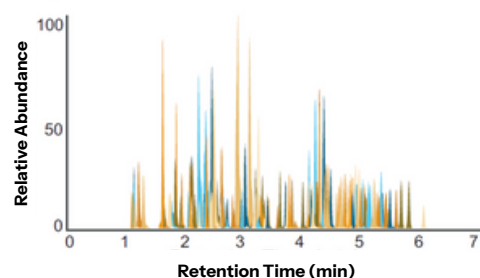
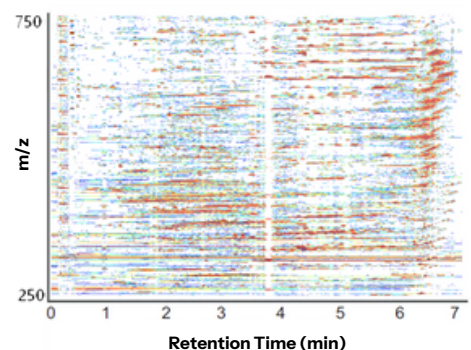
Bioactive Lipids Analysis

Sapient offers a semi-targeted LC-MS/MS method optimized specifically for analysis and discovery of bioactive metabolites.

Dysregulated bioactive lipid levels have been reported in diseases ranging from cancer to diabetes to cardiovascular disease. Sapient's method allows for **rapid profiling of a broad range of bioactive lipids** in your biosamples.

Sample preparation selectively isolates and stabilizes unsaturated semi-polar metabolites which are analyzed using high resolution mass spectrometry.

Sapient has made these bioactive lipid measurements in >50,000 people and in relation to longitudinal adjudicated outcomes across multiple disease areas, including heart disease, cancer, neurodegenerative disease, lung disease, liver disease, GI illness, and rare diseases.



Sapient currently has approximately 300 chemical standards covering the compound classes below, and through spectral networking have categorized thousands of analogs of known classes within the method.

Oxylipins (eicosanoids, docosanoids, octadecanoids) 300 known, 150 putative, 300 novel	VLCDCA s 60 known	Glucuronidated sterols 20 known, 50 putative
Pro-resolving compounds 15 known, 100 putative	PUFAs 30 known	Endocannabinoids (pos mode) 12 known, 10 putative
Porphyrin analogs 4 known, 10 putative	Bile acids 20 known, 50 putative	FAHFAs 80 known
Additional unknown metabolites: 3,000		

**Request
today.**

See how Bioactive Lipids analysis can **benefit your study.**
[sapient.bio](https://www.sapient.bio) | discover@sapient.bio | 858.290.7010