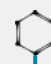
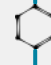
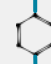



# Target Metabolite and Lipid Panels

Sapient's suite of panels enable targeted exploration of small molecules in specific chemical classes and commonly associated with health and disease.

Our high-sensitivity mass spectrometry-based method can detect subtle changes in biomarker levels stemming from dysregulated biological processes, disease, drug exposure, and other factors.

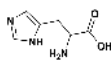
## *Focused biomarker discovery analyses with rapid time-to-insight*

-  Ready-to-order panels with customization available
-  Analyzed using high throughput mass spectrometry for rapid results in <60 days
-  Relative quantification
-  Follow-on data analysis and biomarker validation services

## PANELS OFFERED

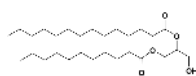
### Amino Acids Panel

Rapidly measures up to 47 amino acids and their derivatives.



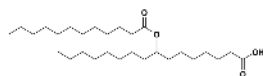
### Diglycerides Panel

Facilitates rapid profiling of 14 diacylglycerols (DAGs).



### FAHFAs Panel

Detects 25 fatty acid esters of hydroxy fatty acids (FAHFAs).



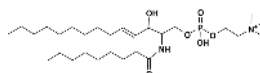
### Fatty Acids Panel

Captures 34 fatty acids and conjugates.



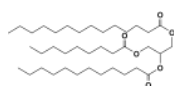
### Phospholipids Panel

Profiles 170 phospholipids across multiple phospholipid subclasses.



### Triglycerides Panel

Enables rapid profiling of 161 triacylglycerides (TAGs).



### VLCDCA Panel

Detects 17 very-long-chain dicarboxylic acids (VLCDCA).



### Inflammatory / Anti-inflammatory Panel

Profiles dynamic small molecule biomarkers known to associate with inflammatory conditions by exhibiting pro- or anti-inflammatory properties.



### Metabolic Dysregulation Panel

Assays key small molecules in metabolic pathways implicated in metabolic dysregulation.



Sapient can also customize a target panel to include your specific metabolites and/or lipids of interest.

## Order your panel today.

Request a panel for focused small molecule biomarker discovery at [sapient.bio/panels](https://sapient.bio/panels).

[sapient.bio](https://sapient.bio) | [discover@sapient.bio](mailto:discover@sapient.bio) | 858.290.7010